

AETERDERM®



# Puri Tox™

CLOSTRIDIUM  
BOTULINUM TOXIN TYPE A



Language EN



 Purified Botulinum Neurotoxin Complex

# ORIGINAL STANDARD SAFE

## 99.64 % of Purity

- Botulinum toxin with exceptional purity: 99.6377%

## 100 % protein profile identical to the original botulinum toxin complex

- A complete protein structure composed of NTNH, BoNT-HC, BoNT-LC, one HA50, three HA33 subunits, three HA20, and HA17.

## 7.5 Years of Proven Safety

- 2 years of development, 24 weeks of animal testing, 5 years of accumulated clinical data

## 6 Months of clinically proven efficacy

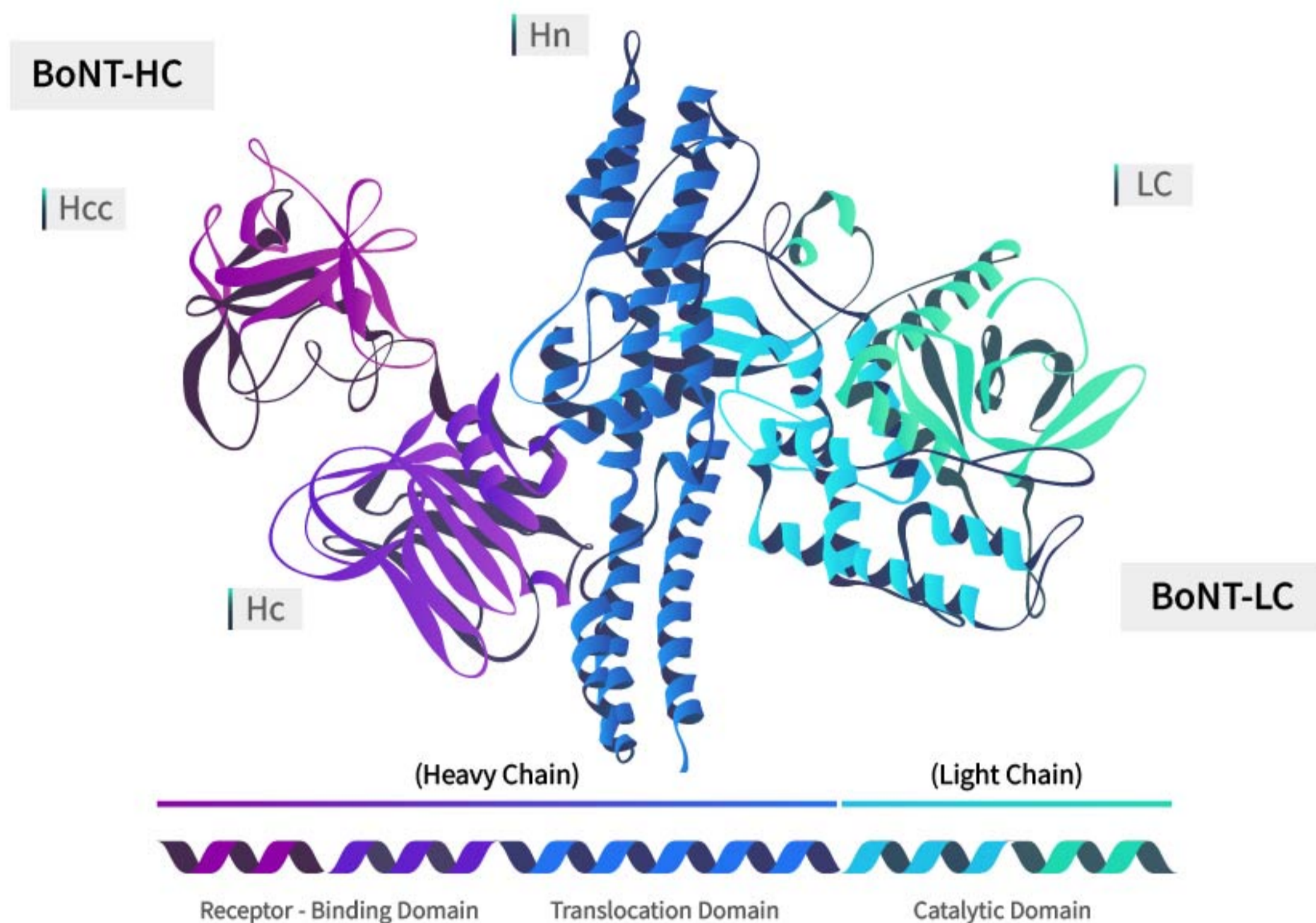
- A minimum 6-month duration of effect was verified through clinical trials.



# 900kDa Complete Complex

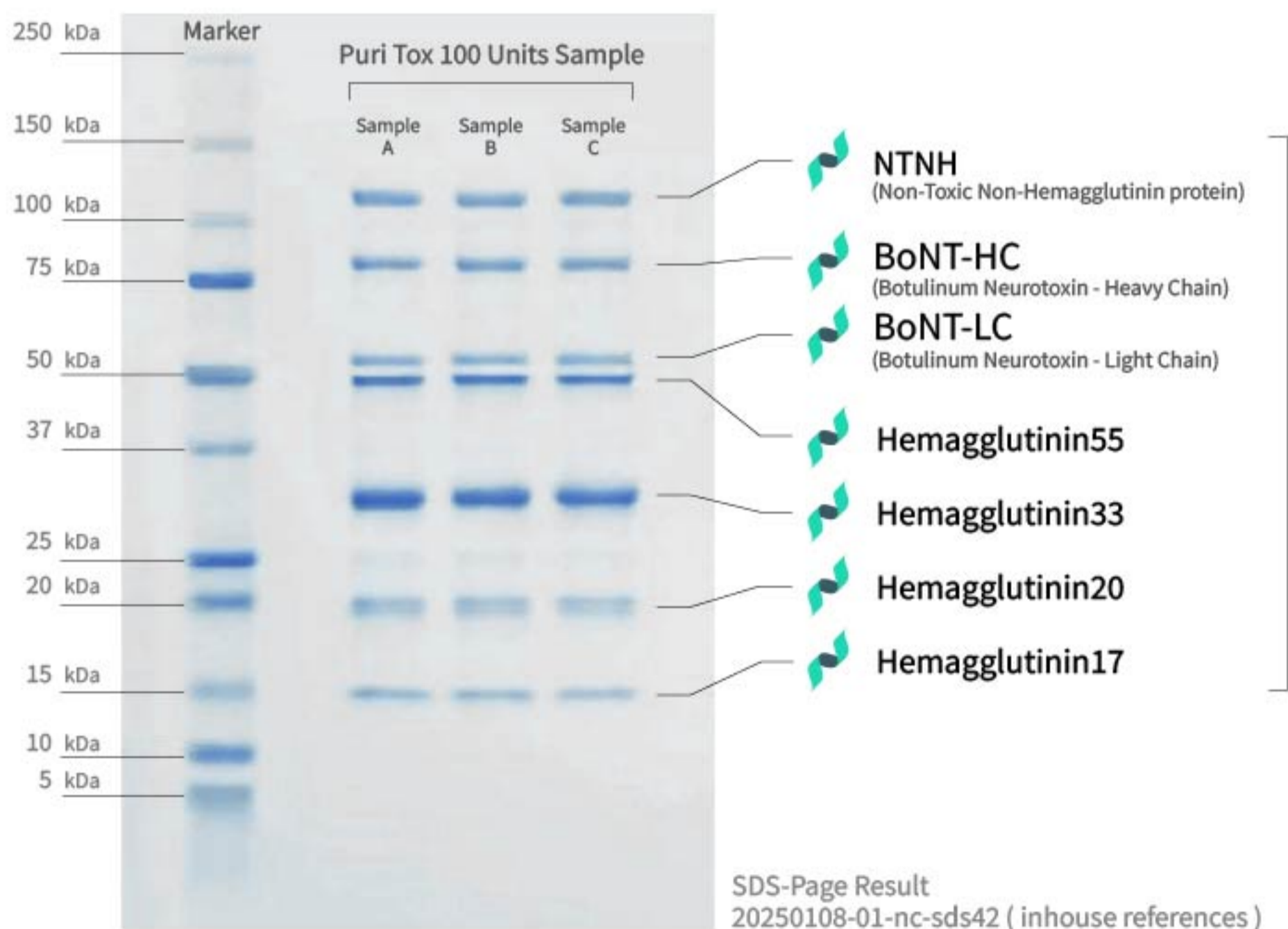
of Botulinum Toxin Type A

## PuriTox™ Neurotoxin



## All Key Proteins

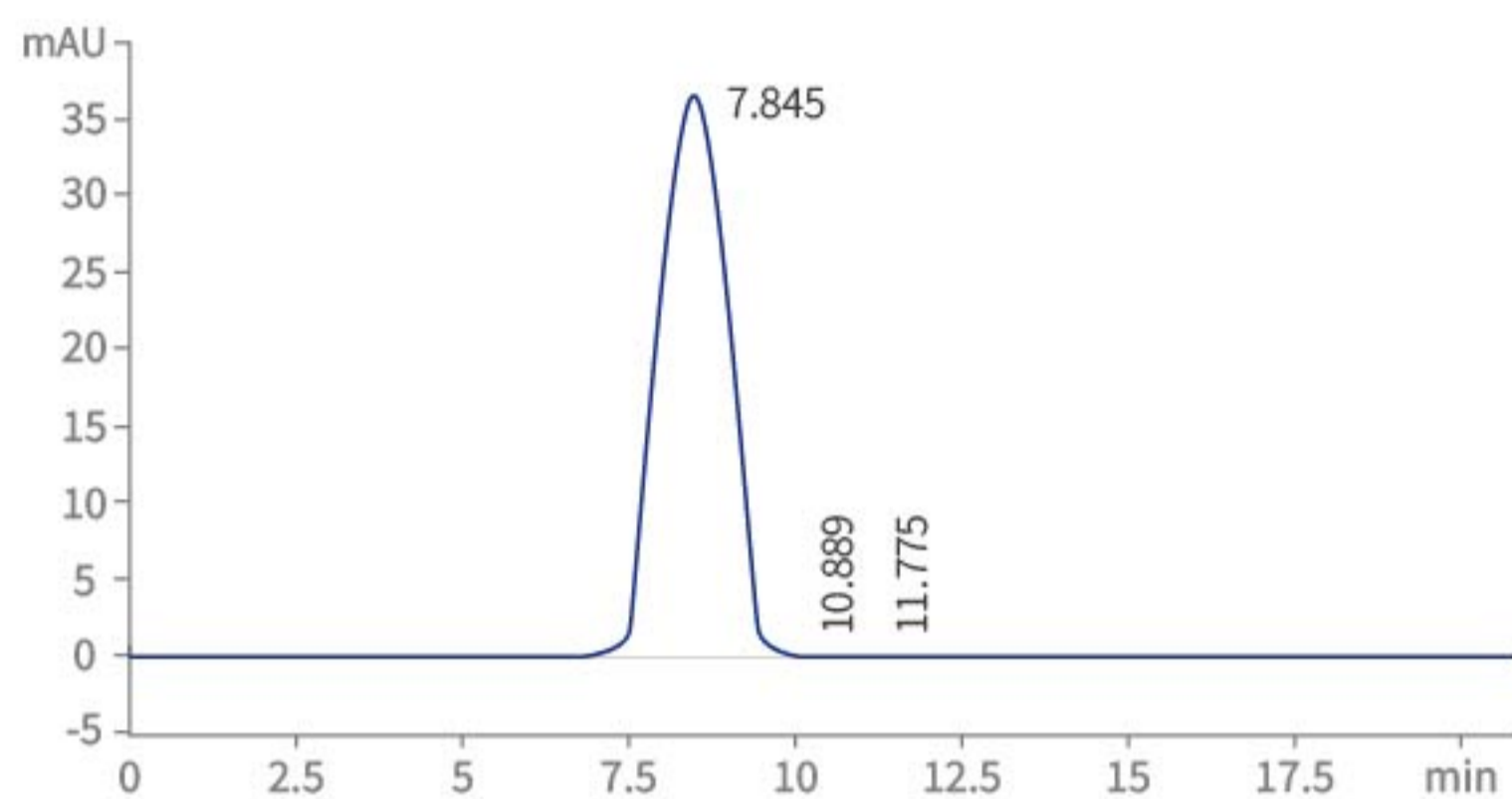
of the Botulinum Toxin Type A complex are stably detected in SDS-Page Results



# Research Studies

The Purity of Puri Tox<sup>®</sup> was determined to be

**99.6377%** with SEC-HPLC analysis sheet

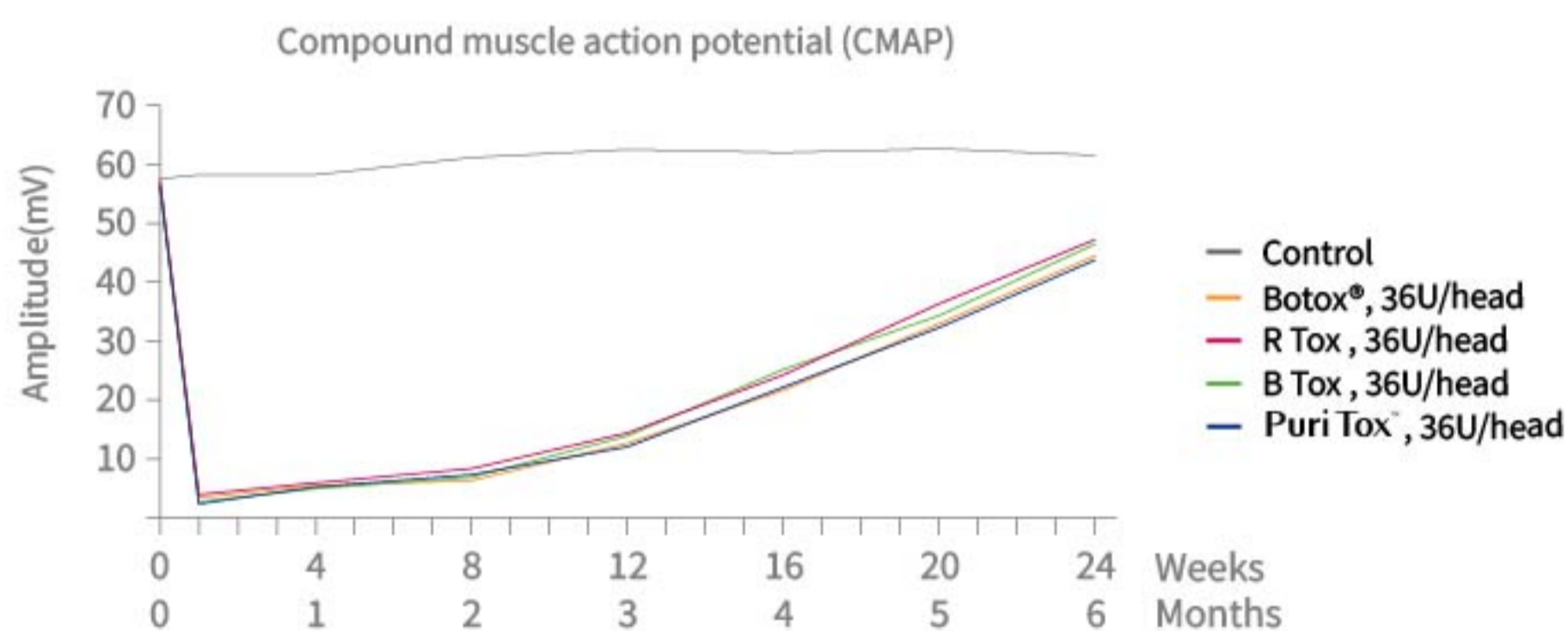


DAD1 A, Sig=278,4 Ref=360, 100 (20180904/18090401.D)

According to the electromyography in rats,  
Puri Tox<sup>®</sup> has inhibitory effects on neuronal electrical signal transduction

## Equivalent

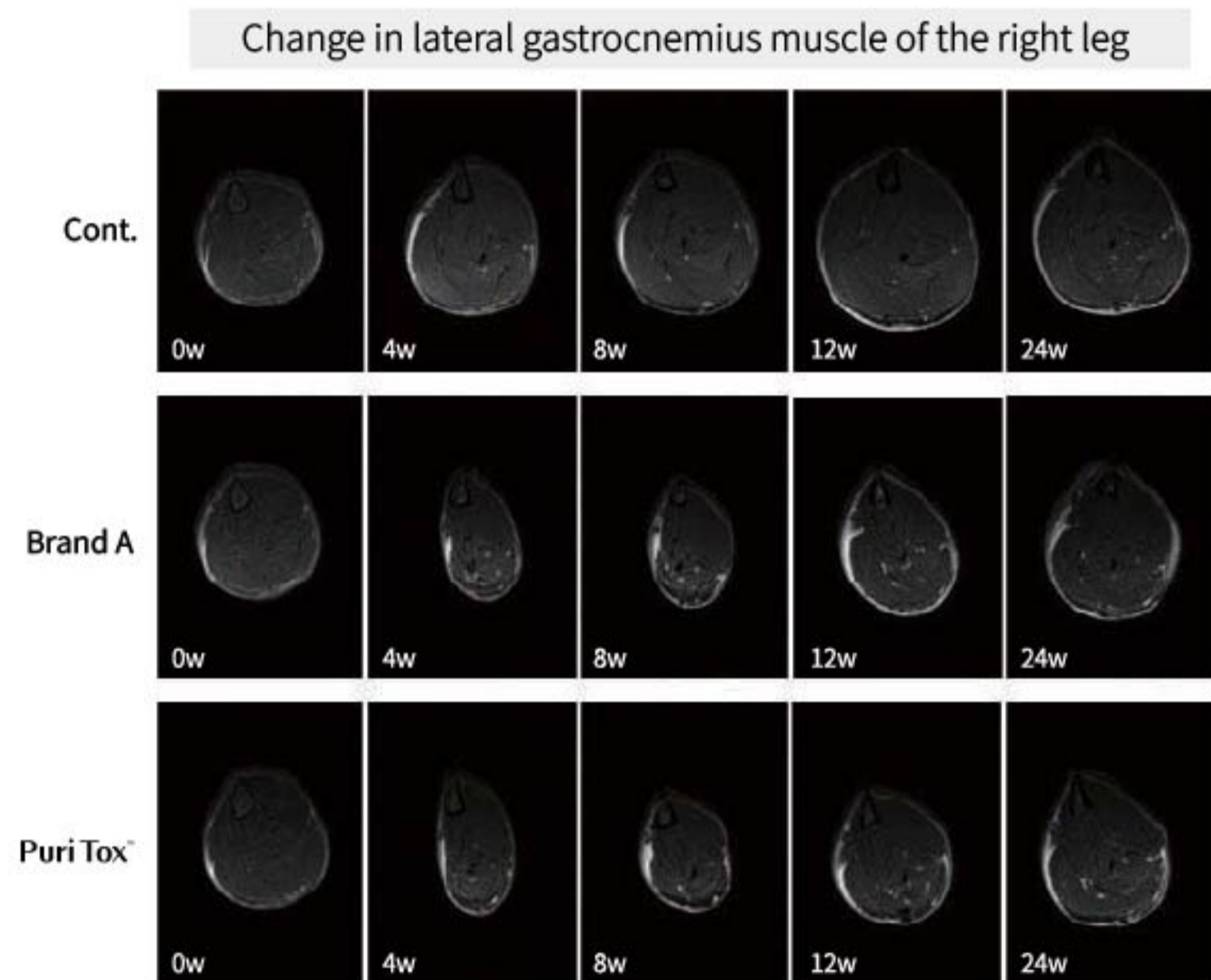
to those of the World Standard products.



※ The absolute amplitude (mV) values shown in the graphs may vary depending on the measurement method and the muscle region selected by the testing institution. Therefore, please focus on relative differences within each graph rather than comparing absolute values across different studies.

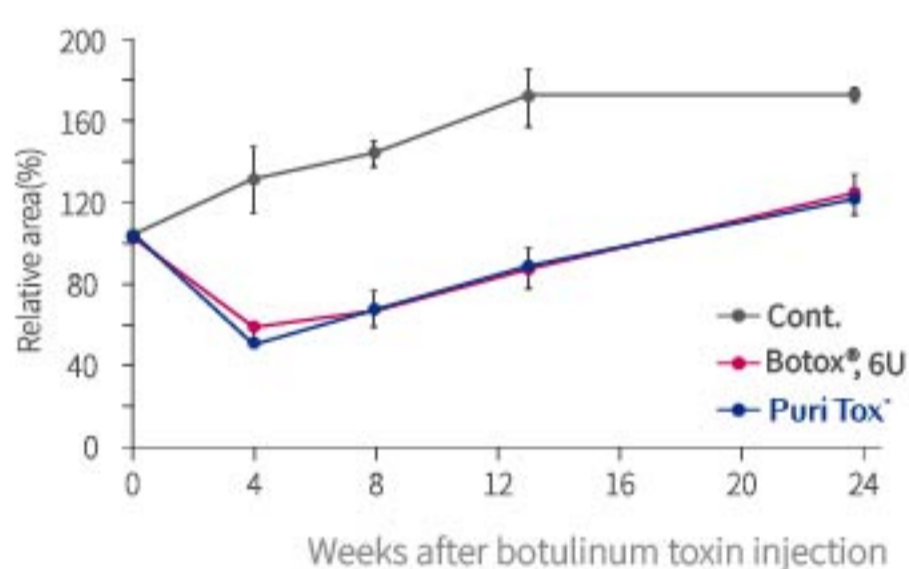
# Muscle Volume Assessment

In an MRI for muscle volume assessment in rats, PuriTox™ has shown its activity that promotes muscle volume reduction comparable to that of the Brand A.



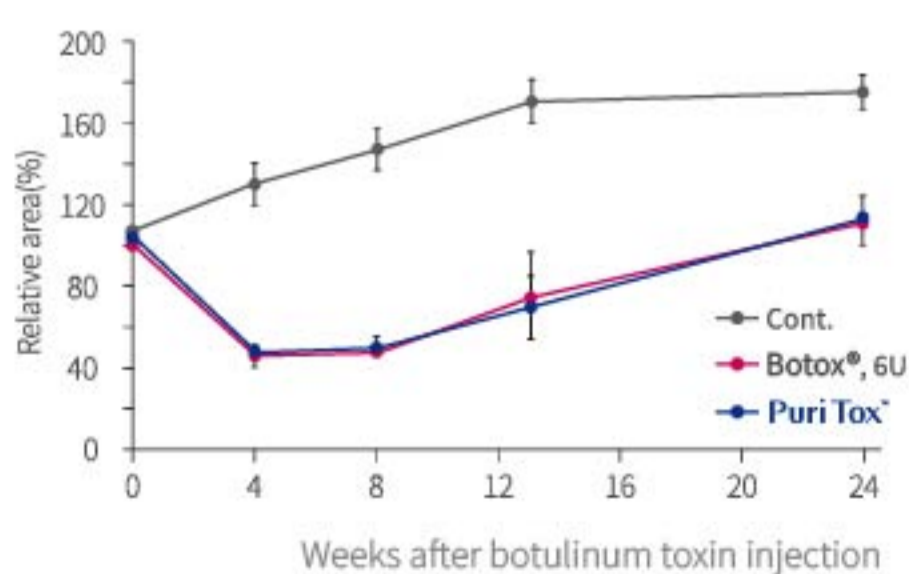
(The sizes of the lateral gastrocnemius muscle of the right leg, the whole leg muscle, and the calf are measured with MRI before and 4, 8, 12, and 24 weeks after injection.)

## Change in whole muscle area



PuriTox™ demonstrated efficacy and effect consistent with the world standard in whole muscle area reduction.

## Change in calf area



PuriTox™ also showed comparable efficacy in calf area reduction, meeting the world standard.

# Non-Clinical Studies

Non-inferiority testing for “improvement of glabellar lines at maximum frown as rated by the Investigator’s on-site evaluation at 4 weeks post-dose as compared with baseline”

demonstrated that subjects with improvement accounted for 78.83% (108/137) in the study group while 83.09% (113/136) in the Brand A group, without a statistically significant difference between two groups (p=0.3706).

Thus, the study group was not inferior to the control group.

Period	Puri Tox™	Brand A	Remark
4week	78%(108/137)	83%(113/136)	(p=0.3706)
8week	66%(89/134)	66%(89/135)	(p=0.9320)

Non-clinical studies of Puri Tox™ have been conducted with mice, rats, rabbits, and monkeys

Category	Study	Title of Study	
Toxicity Study	Single-Dose Toxicity Study in Rodents	An Intramuscular Single-Dose Toxicity Study in Rats	
	Repeated-Dose Toxicity Study in Rodents	A 4-week Intramuscular Repeated-Dose Toxicity Study in Rats with a 4-week Recovery Period	
	Single-Dose Toxicity Study in Non-Rodents	An Intramuscular Single-Dose Toxicity Study in Monkeys.	
	Repeated-Dose Toxicity Study in Non-Rodents	A 29-Day Intramuscular Repeated-Dose Toxicity Study in Monkeys with a 28-Day Recovery Period (Include ECG JET Monitoring)	
	Reproductive Toxicity Study in Rodents		Reproductive Toxicity: An Intramuscular Preliminary Embryo-Fetal Developmental Study in Rats
			Reproductive Toxicity: An Intramuscular Embryo-Fetal Developmental Study in Rats
	Reproductive Toxicity Study in Non-Rodents		Reproductive Toxicity: An Intramuscular Preliminary Embryo-Fetal Developmental Study in Rabbits
Reproductive Toxicity: An Intramuscular Embryo-Fetal Developmental Study in Rabbits			
Safety Pharmacology Study	Central Nervous System Safety Pharmacology Study	A Study of Effects on Body Temperature and Systemic Activity in Mice	
	Respiratory System Safety Pharmacology Study	hERG Assay	
	Cardiovascular System Safety Pharmacology Study	A Study of Effects on Respiratory Rate and Tidal Volume in Rats	
Pharmacodynamics Study	Stability and Efficacy Study	A 24-week Efficacy Study with Comparator Botox in Rats	

# Specification



**PuriTox™ 100 UNITS**

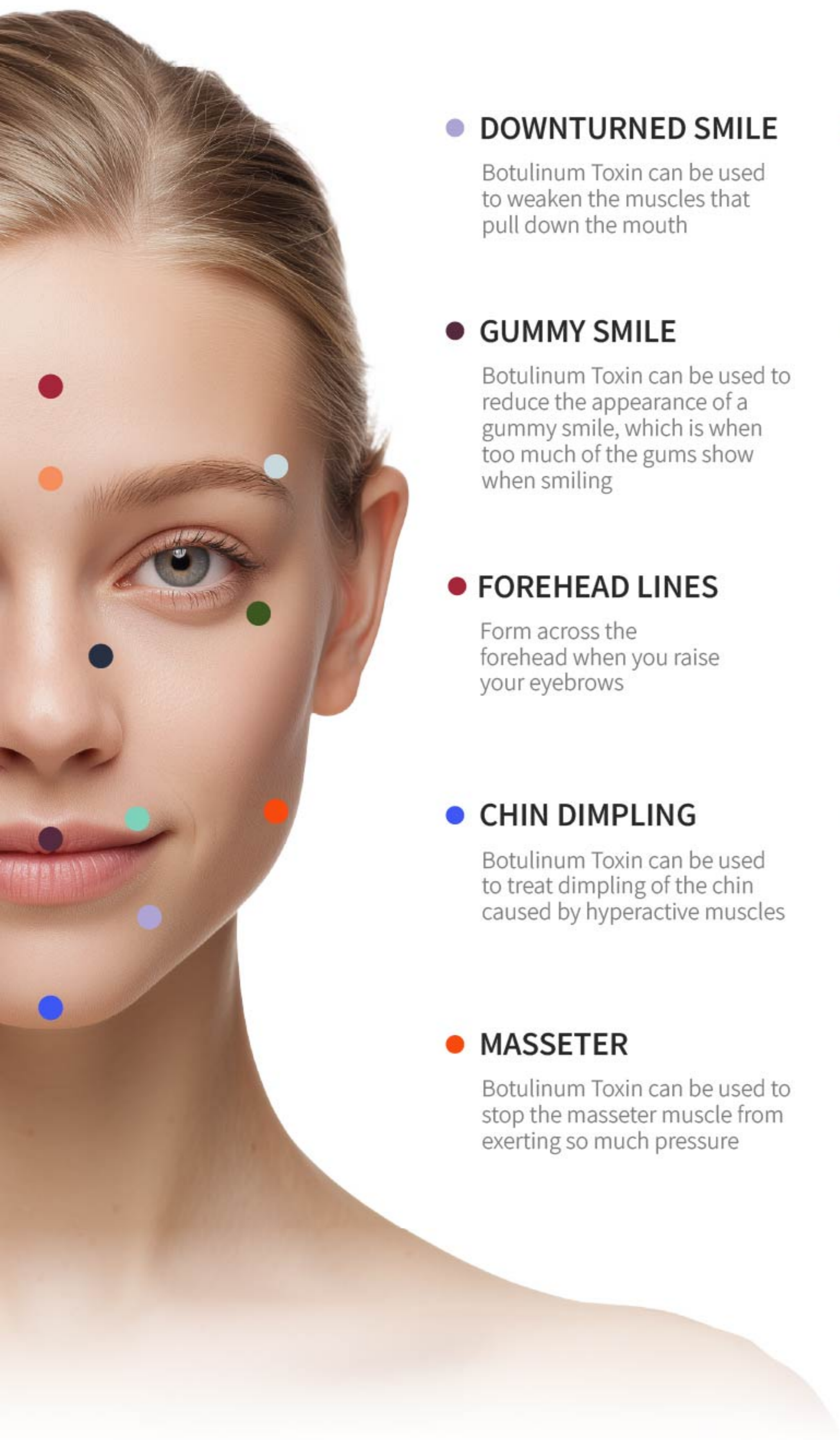


**PuriTox™ 200 UNITS**

Main Ingredient	Clostridium Botulinum Toxin Type A
Additive	Albumin, Sodium chloride
Appearance	White or light-yellow dried matter in a clear and colorless vial. When dissolved in saline, the solution is clear and colorless.
Storage	Sealing container, refrigeration(2~8°C) storage
Expiry period	36 months
Characteristics	Composite with a molecular weight of 900 kDa

# Common Injection Sites

for Wrinkle Relaxation



## ● DOWNTURNED SMILE

Botulinum Toxin can be used to weaken the muscles that pull down the mouth

## ● FROWN LINES

Form between the eyebrows when you frown

## ● GUMMY SMILE

Botulinum Toxin can be used to reduce the appearance of a gummy smile, which is when too much of the gums show when smiling

## ● BUNNY LINES

Form on the side of the nose when you scrunch up your face

## ● FOREHEAD LINES

Form across the forehead when you raise your eyebrows

## ● LIP LINES

Form around the lips when you purse or pucker your lips

## ● CHIN DIMPLING

Botulinum Toxin can be used to treat dimpling of the chin caused by hyperactive muscles

## ● EYEBROWS

When your brow needs a slight lift

## ● MASSETER

Botulinum Toxin can be used to stop the masseter muscle from exerting so much pressure

## ● CROWSFEET

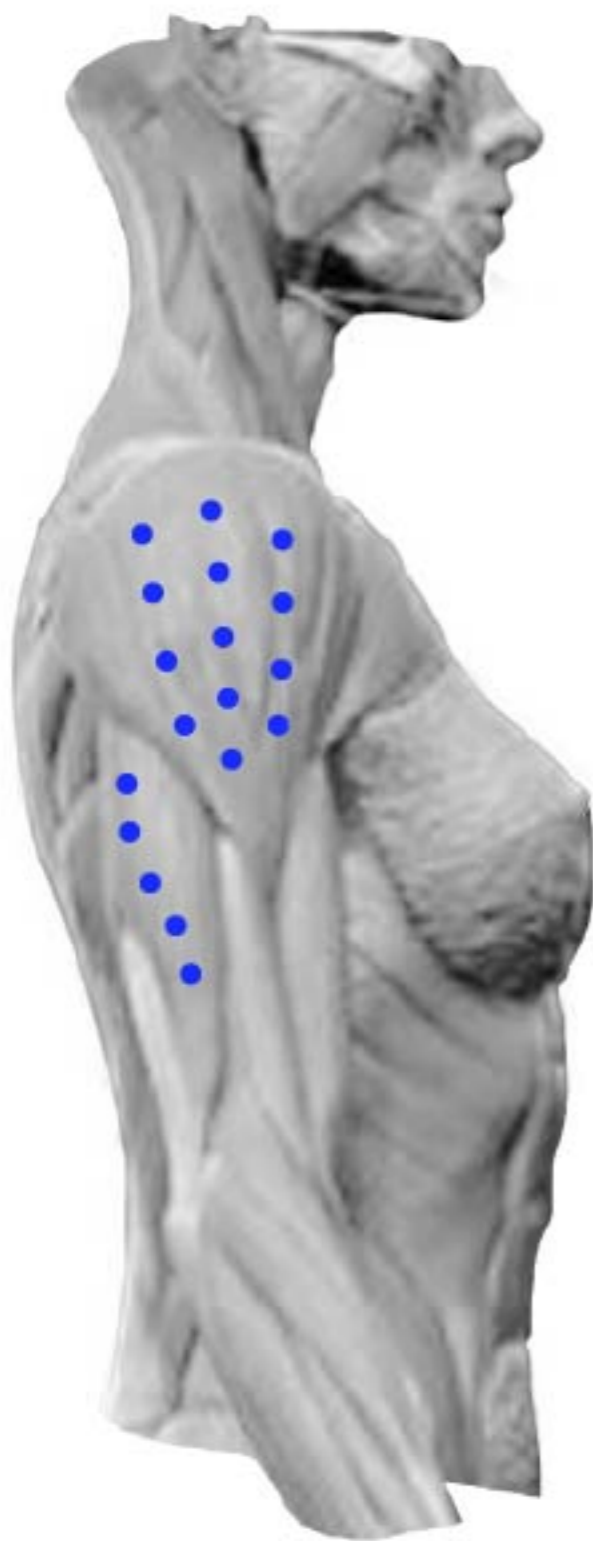
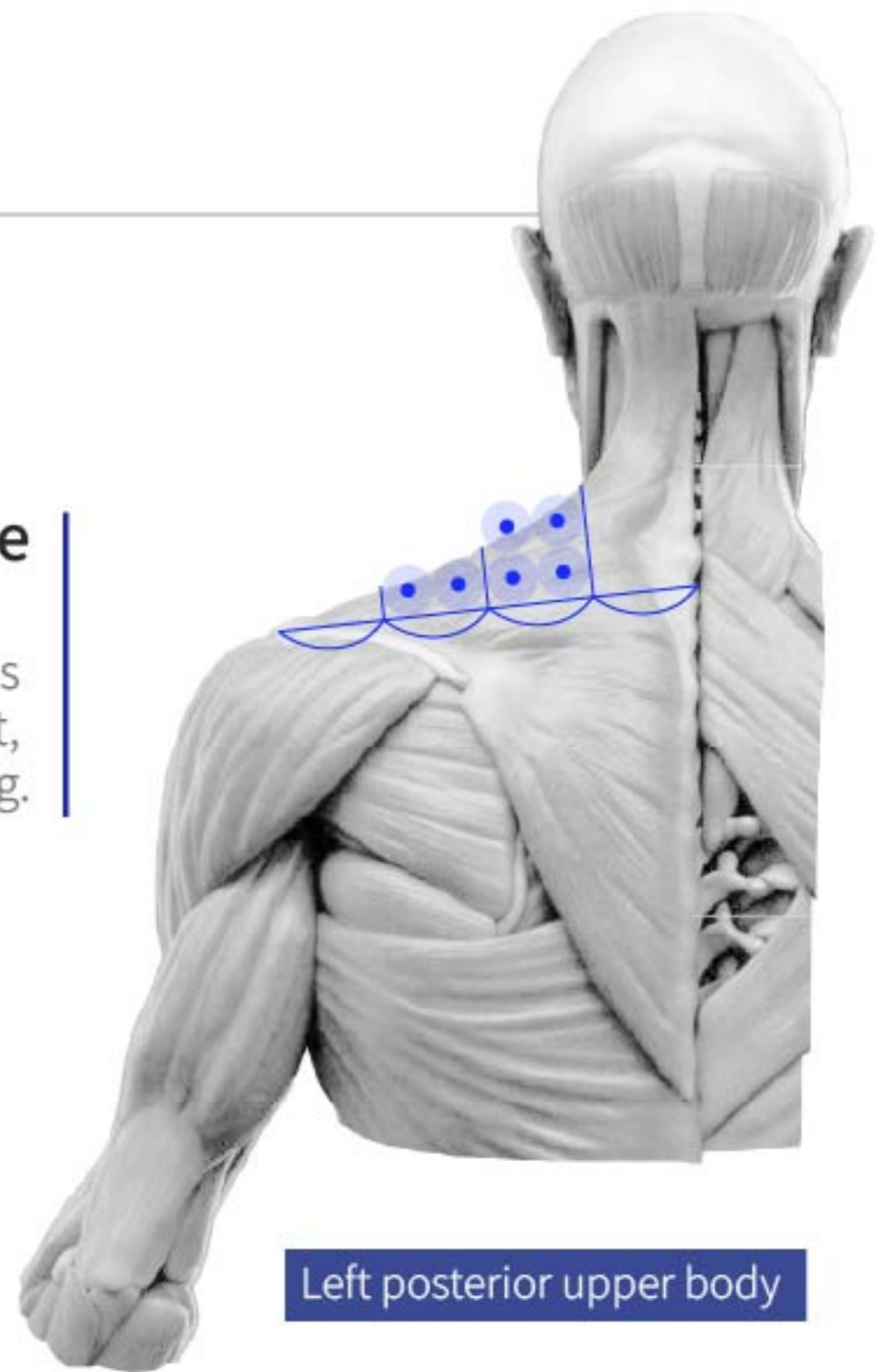
Form around the eyes when you smile

# Body Injection Sites

for Aesthetic Body Contouring

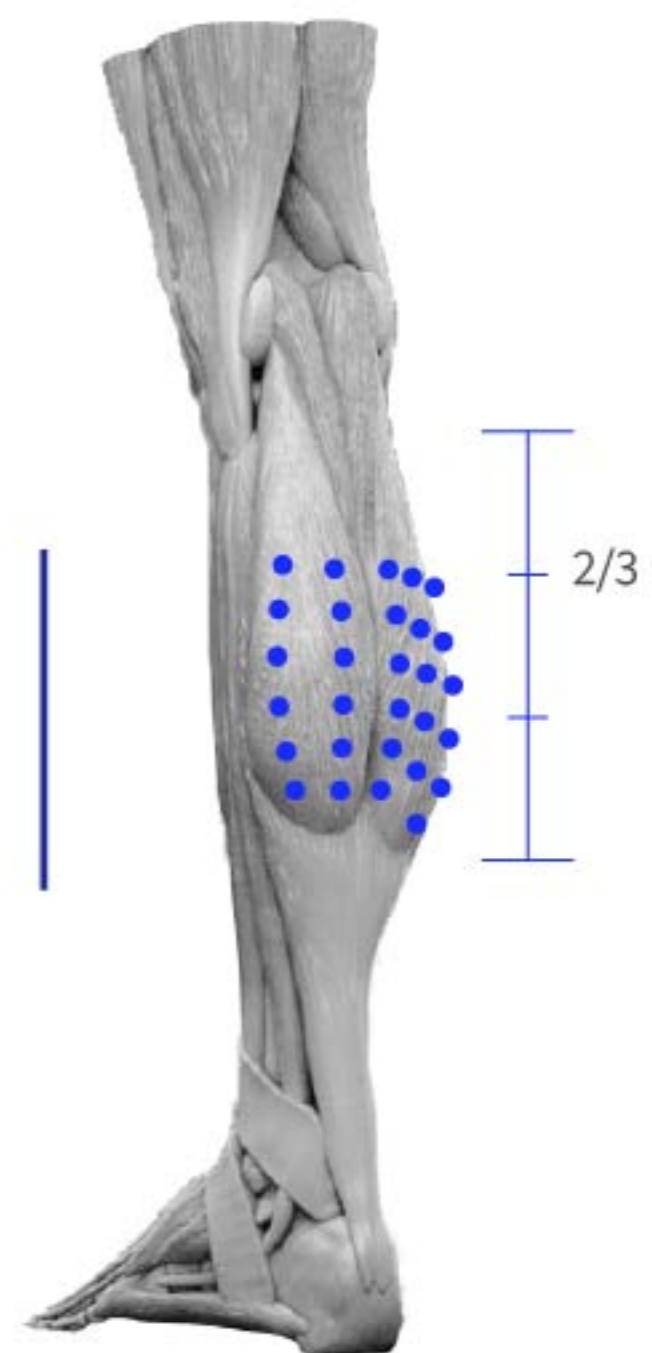
## Upper portion of the Trapezius muscle

Injection of PuriTox® into the upper Trapezius muscle reduces excessive shoulder elevation and improves postural alignment, with additional benefits for body contouring.



## Lateral Deltoid muscle Lateral head of the Triceps brachii

Injection of PuriTox® into the lateral Deltoid muscle and the lateral head of the Triceps brachii reduces upper body volume and improves the bulky appearance of the shoulder–arm contour.



## Gastrocnemius muscle

Injection of PuriTox® into the Gastrocnemius muscle reduces excessive calf hypertrophy and improves the smoothness of the leg contour.

※ PuriTox® may also be administered to various muscle groups for contouring purposes, by reducing disproportionate hypertrophy, and for therapeutic purposes, by correcting abnormal muscle activity. Its use should follow thorough clinical evaluation and patient counseling regarding potential adverse effects, under the judgment of qualified professionals.

# Hyperhidrosis Treatment

for Axilla with Area Mapping

---

## Mapping the Hyperhidrotic Area with Starch-Iodine Test



**1**

Clean and dry the axilla thoroughly and completely.



**2**

Paint the entire underarm area with an iodine solution or povidone-iodine, or with pre-moistened Betadine® swabs or swabsticks.

**3**

Allow the solution to dry. This will take a few seconds to approximately 1 minute.



**4**

Dust the entire site evenly and very lightly with fine starch powder. Any commercially available cornstarch will suffice.



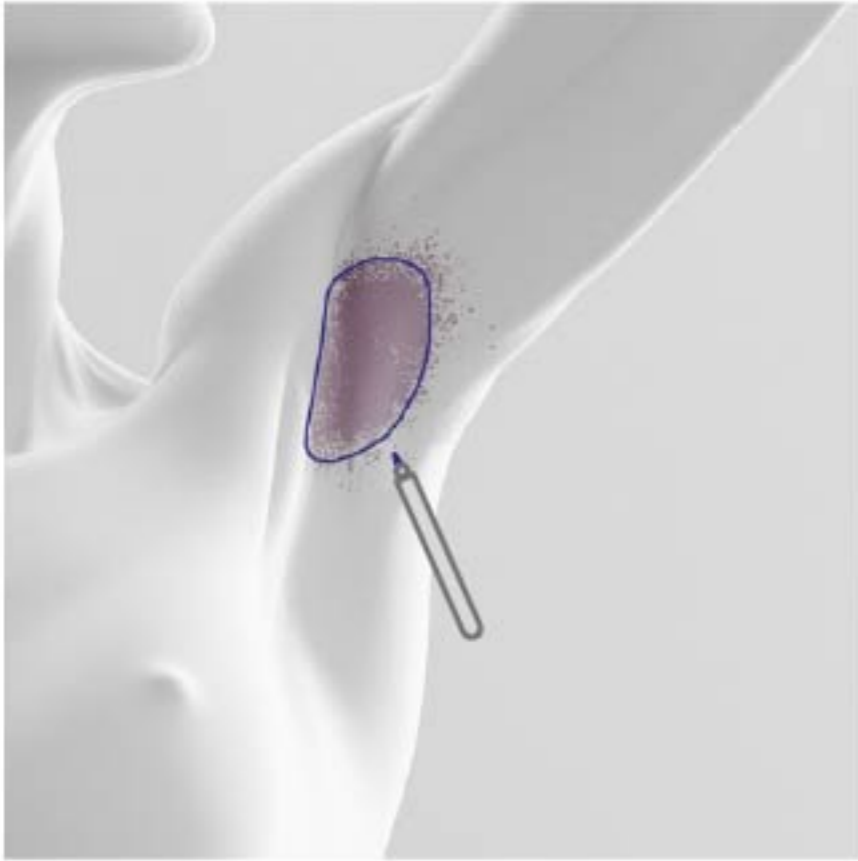
**5**

Wipe off any excess.



**6**

The presence of sweat will cause the mixture to turn a dark blue-purple color, making the location of sweating discernible. Wait approximately 10 to 15 minutes for the reaction to occur.

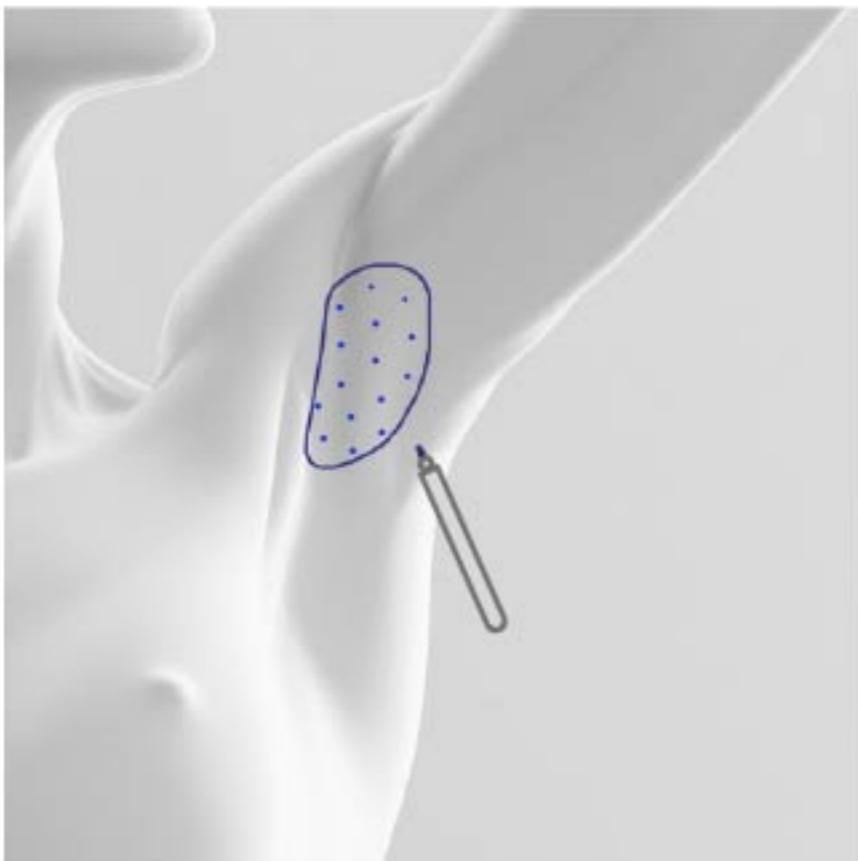


**7**

Outline or circle the area of excessive sweating with a surgical marker, or dermatographic pen. The area may appear as one circle or oval, or it may appear as multiple areas, like “islands”.

**8**

Clean off excess starch and iodine solution.



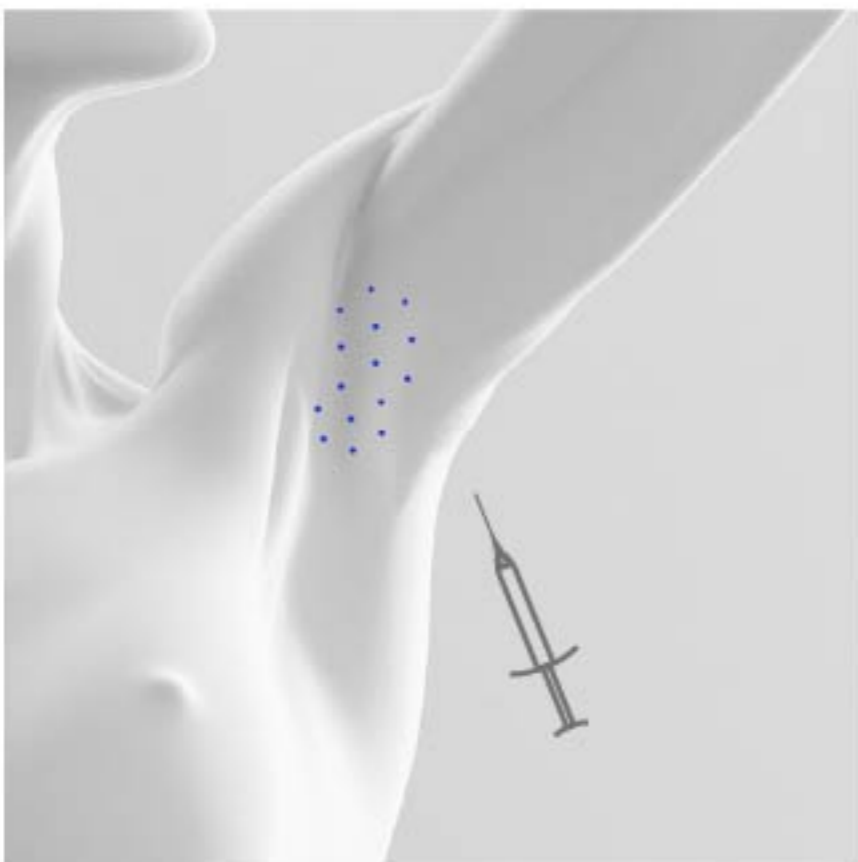
**9**

Use a surgical marker, or dermatographic pen to identify locations within the sweating area that are 1.5 cm apart from one another. The sites should be positioned in a staggered manner rather than linear. Because Puri Tox diffuses under the skin to a diameter of approximately 2 cm, it is recommended that physicians administer the injections at sites 1.5 cm apart in order to provide uninterrupted coverage and treatment of the area. This technique helps to limit any area of no effect.

**10**

Prep the area with antimicrobial solution.

## Injection Guidelines After Mapping



Recommended dose	50 U / Axilla
Reconstitution	100U / 4 mL saline
Injection plane	Intradermal
Needle	30 Gauge recommended
Injection angle	10 ~ 30°
Injection spacing	1.5 cm diameter apart
Sites	Typically 12 ~ 15 per axilla
Diffusion	2 cm diameter
Technique	Inject slowly, maintain angle

- | Avoid puncturing directly on ink mark (risk of permanent pigment)
- | Physicians should obtain a visible wheal confirming proper intradermal placement.
- | Hold compression to facilitate hemostasis.
- | The same treatment protocol can be applied to the palms, soles, and other areas with excessive sweat gland activity.

# PuriTox™

CLOSTRIDIUM BOTULINUM TOXIN TYPE A





# PuriTox™ 100 UNITS

CLOSTRIDIUM  
BOTULINUM TOXIN TYPE A

## [ COMPOSITION ]

Clostridium Botulinum Toxin Type A	100 Units
Human Serum Albumin	0.5mg
Sodium Chloride	0.9mg

## [ PACKAGING ]

100 Units / 1 Vial / 1 Box



# PuriTox™ 200 UNITS

CLOSTRIDIUM  
BOTULINUM TOXIN TYPE A

## [ COMPOSITION ]

Clostridium Botulinum Toxin Type A	200 Units
Human Serum Albumin	1.0mg
Sodium Chloride	1.8mg

## [ PACKAGING ]

200 Units / 1 Vial / 1 Box

**WEDERM**



WEDERM Co., Ltd.

📍 #502, 5F, JnK Digital Tower, 111, Digital-ro 26gil, Guro-gu, Seoul, Republic of Korea

🌐 <https://wedermglobal.com>

✉ [wederm@wederm.co.kr](mailto:wederm@wederm.co.kr)

📺 [wederm.official](#)

☎ +82-70-4776-5961