



KABELLINE

CONTOURING SERUM

■ ■ ■ ■
2020



WHAT IS KABELLINE?



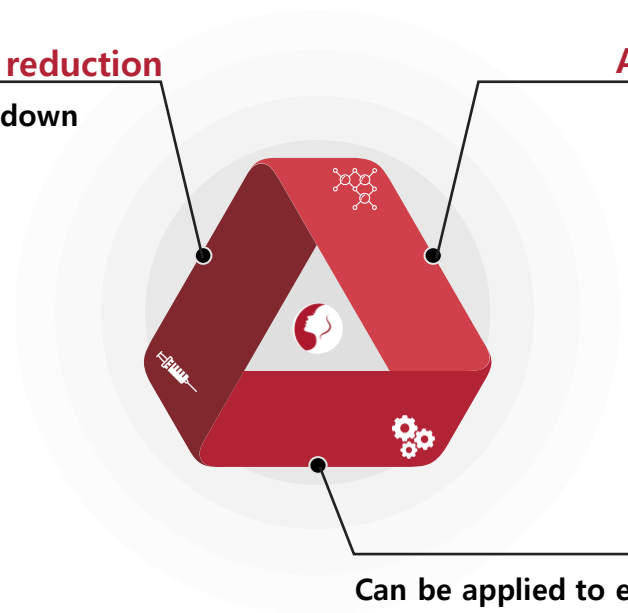
8ml * 5vials/ box

01 **Injectable**
for localized fat reduction

Effectively breaks down
adipocyte cells

Active ingredient 02

Deoxycholic Acid

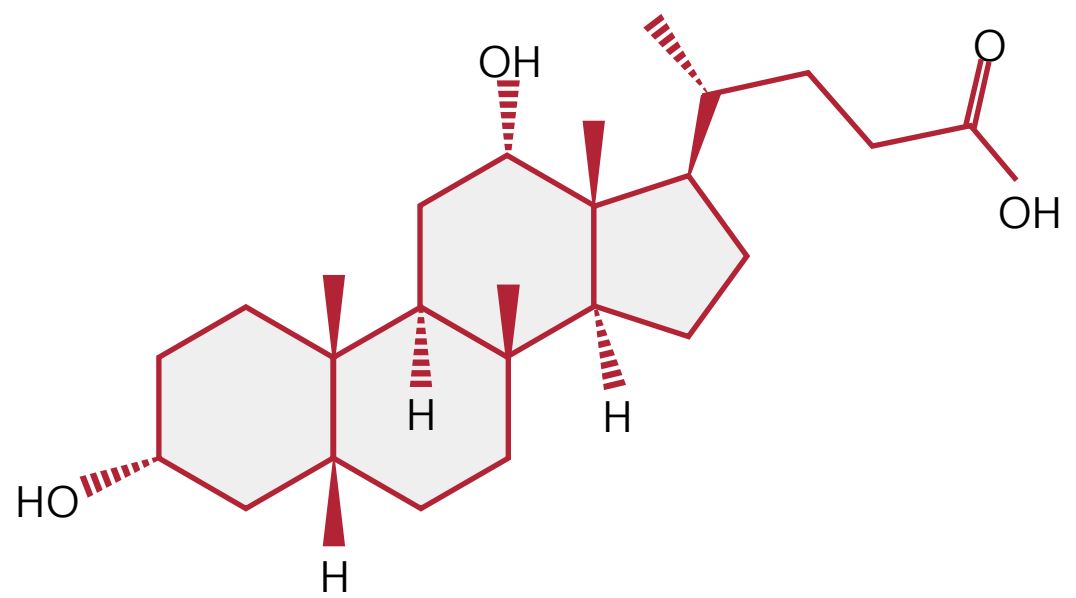


Usage 03

Can be applied to every part of the face
and body that has fat
Effective for specific area
which is difficult to remove by exercise



DEOXYCHOLIC ACID



GENERAL INFO

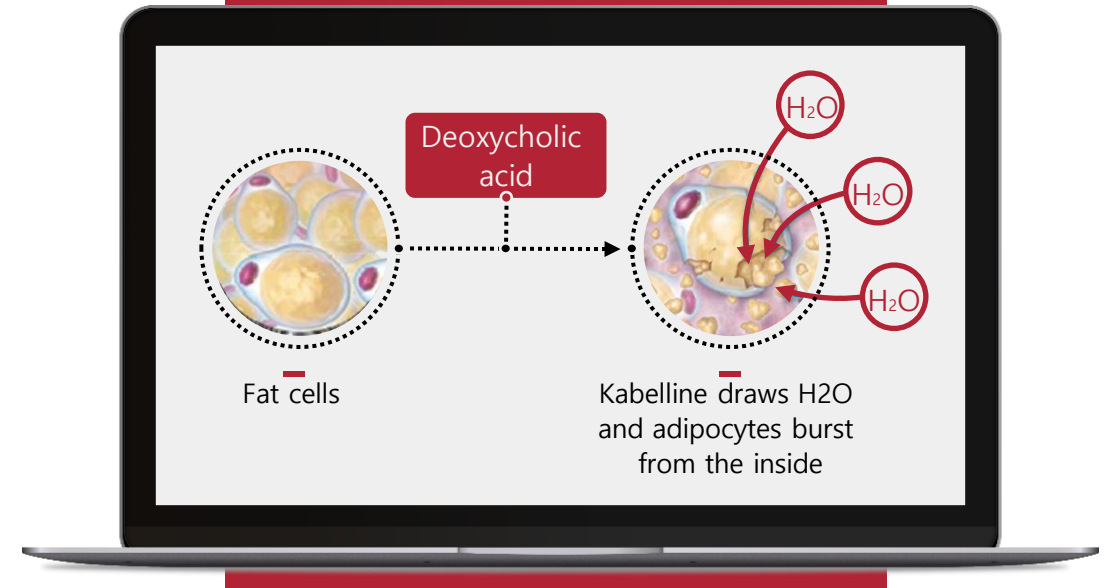
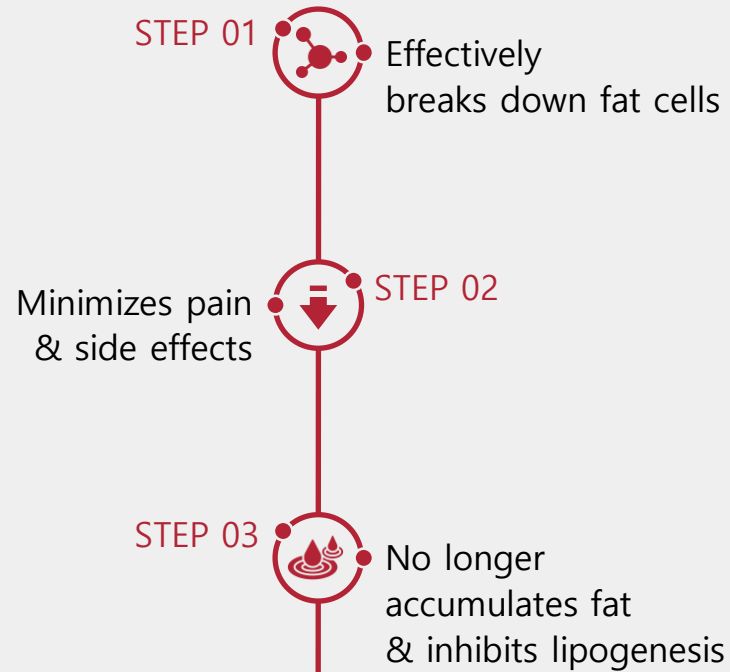
01

Deoxycholic acid is a fat dissolving material and a human bile acid, a metabolic byproduct of human intestine bacteria.

02

In the human body, deoxycholic acid is used in the emulsification of fats for the absorption in the intestine.

How Kabelline works?






Unwanted fat cells are naturally biodegraded and emitted through lymphatic duct or macrophage





Comparison of other products and Kabelline

	 Product based on Plant extract	 Other Lipolysis Product	  KABELLINE
Main Ingredient	Soy Isoflavone Ferment, Juglans Regia Seed, Tyrosine, Peptide, etc	Phosphatidilcolin, Deoxycholic Acid	Deoxycholic Acid, Carnitine, etc
Durability	Officially 3~4 months	Technically eternal/ Officially 5 years	Technically eternal/ Officially 5 years
Advantages	Reduces Fat size	Breaks down Fat cell	Breaks down Fat cell, Inhibits Lipogenesis
Side Effect	Yoyo effect Shrunk fat cell turns back to be normal	Swelling, Bruising	No swelling, no bruising
Down Time	1~3 days	20~30 days	1~3 days
Pain	Painless	Severe Pain	Painless

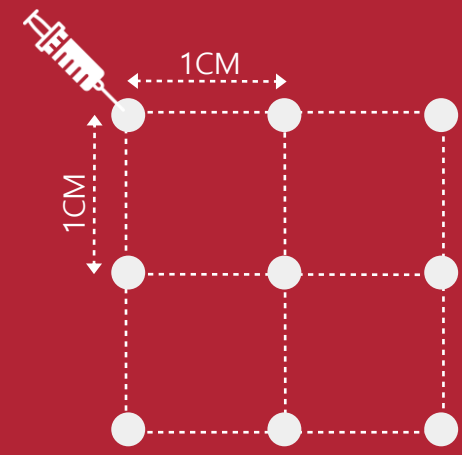


TREATMENT



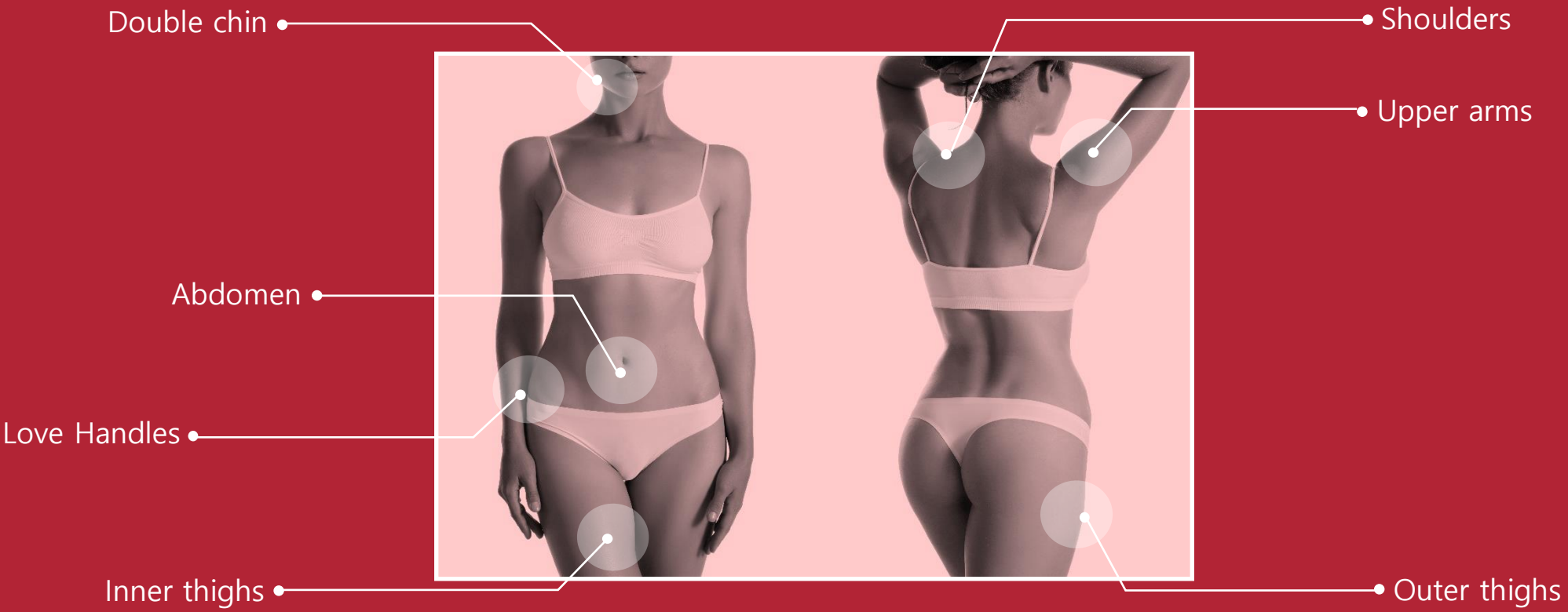
Injection volume	Face: 2 ml / Body: 4~8ml
Injection depth	Subcutaneous layer
Needle	30G
Maximum dosage	Up to 16 ml (2 ampoules) per session
Number of treatments	3~6 sessions in total at 1-week interval
Precautions	Massage after the application is recommended.

<Point Injection>
Apply 0.2~0.3ml at each point





APPLICATION SITES





BEFORE & AFTER

BEFORE



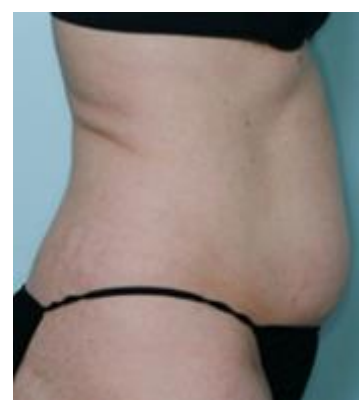
KABELLINE



AFTER



BEFORE



AFTER



KABELLINE





KABELLINE

THANK YOU[†]

