



CLAIReyes

<https://k-aesthetic-ws.com/>



CLAIReyesSpecification



1.1ml* 1 Syringe



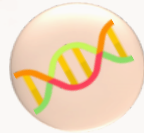
Polynucleotide 2mg/ml



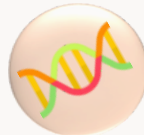
Oligopeptide-34



Sodium Chloride



Sodium Phosphate



Disodium Phosphate



Water



Sodium DNA



3~4 treatments at intervals of 2~3 weeks



Room temperature



CPNP Certified

<https://k-aesthetic-ws.com/>



Same quality but more competitive price than Lumieyes

What is Polynucleotide?

Polynucleotide is a compound holding polymers of different length obtained from the silt of salmon



High Efficacy

Increase collagen expression and stimulate cell growth and angiogenesis.



Salmon



PN



Injection



Cell Activation

Increase proliferation and activity of different cells by acting in synergy with several growth factors, modulating cytokines and growth factor production, and influencing immunological response

The Effects of **CLAIR**eyes

I. Anti-Aging

I Anti-Fine Wrinkles

III. Skin Whitening & Rejuvenation

IV. Reducing the signs of acne

V. Enhancing on Skin Elasticity

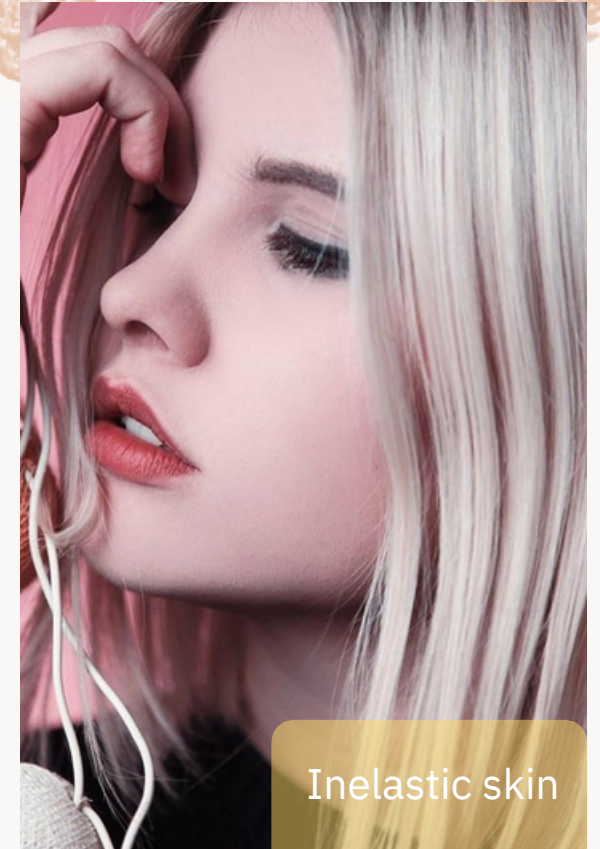
Regenerate your skin with CLAIReyes



Aging



Sensitive skin



Inelastic skin



ELASTY

<https://k-aesthetic-ws.com/>



Rejuvenation



Anti-Aging



Brightness



Rejuvenation





**Anti-Aging
Rejuvenation
Elasticity**



CPNP Certified

<https://k-aesthetic-ws.com/>