



# BARBIE SLIM

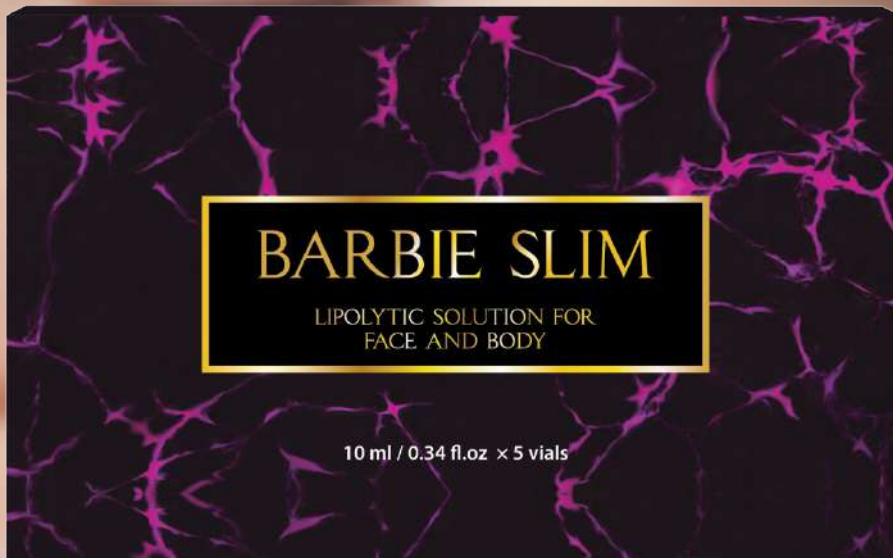
## LIPOLYTIC SOLUTION FOR FACE AND BODY



KORESTETICS GLOBAL LTD. Co  
1006, 313, Central-ro, Yeonsu-gu, Incheon, Republic of Korea, 22006  
Tel: +8210-2942-7225

# BARBIE SLIM

LIPOLYTIC SOLUTION FOR  
FACE AND BODY

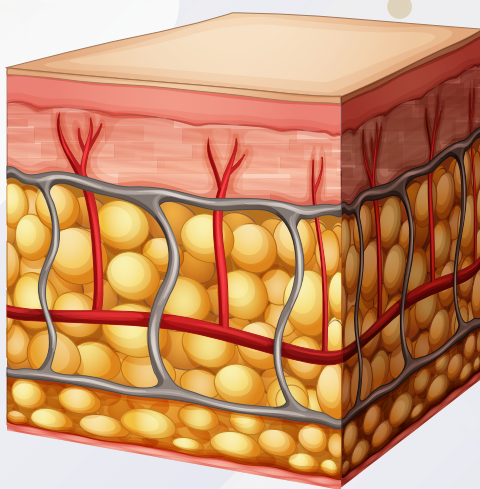


- ✔ Eyelids Circle
- ✔ Under eyes
- ✔ Cheek
- ✔ Face wrinkle
- ✔ Wrinkle near Mouth
- ✔ Double Chin

BARBIE SLIM  
LIPOLYTIC SOLUTION FOR  
FACE AND BODY

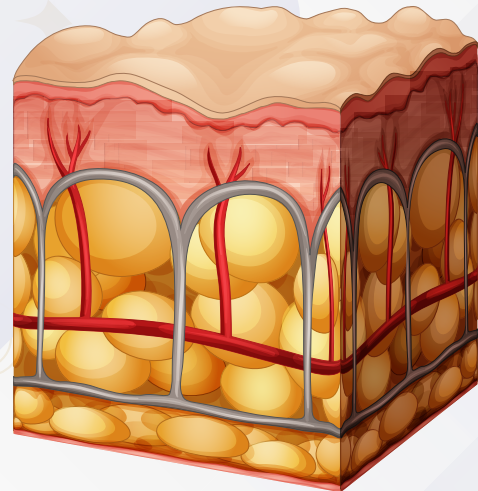
# CAN FAT BE STORED IN YOUR FACE AND BODY?

**Cause ? Lymphokinesis  
Forming a fat layer and cellulite  
on your face and body  
due to poor lymph circulation**



**Healthy skin**

Epidermis  
Dermis with  
collagen fibers  
Fibrous  
septae  
Hypodermis  
Subcutaneous  
fat



**Skin with cellulite**

Forming a fat layer and cellulite  
on your face and body due to poor lymph circulation.

**BARBIE SLIM**  
LIPOLYTIC SOLUTION FOR  
FACE AND BODY

# INGREDIENTS

**Sodium chloride**

**Maronier extract**

**Walnut extract**

**Tyrosine**

**Fucus Vesiculosus Extract**

**Adenosine triphosphate**

**Dysodium adenosinephosphate**

**Methyl propandiol**

**Mechilanolmannuronate**

**BARBIE SLIM**  
LIPOLYTIC SOLUTION FOR  
FACE AND BODY

# HOW DOES BARBIE SLIM WORK?



## **STEP 1**

Searching Fat: Pulverization of detected Fat

## **STEP 2**

Blood Circulation: Stimulating Blood Circulation

## **STEP 3**

Cleansing: Eliminating Fat tissue and waste from the body

## **STEP 4**

Firming your Skin: Improving damaged fat tissue

**BARBIE SLIM**  
LIPOLYTIC SOLUTION FOR  
FACE AND BODY

# APPLICATIONS

- **Fat remaining after the thread lifting**
- **Fat under the eyes**
- **Cheekbones Fat**
- **Fat remaining or produced after plastic surgery**
- **Fat with face wrinkles**
- **Fat on jaw**
- **Fat disrupting Face Shape**
- **Patient with fear of liposuction**
- **Patient with non-outcome from previous procedure**
- **Patient seeking immediate result in short period without swelling or irritation**

**BARBIE SLIM**  
LIPOLYTIC SOLUTION FOR  
FACE AND BODY

# PHARMACOLOGICAL ACTION



Fat Depth: 10~4mm  
Injection gap: 1cm  
Volume: 0.5cc per inject  
Total : 10CCz

## BENEFITS

### **Non-surgery Injection**

Amazing contouring without surgery

### **Minimizing the pain**

Minimizing pain or swelling

### **Short Treatment**

Short procedure enables rapid return to your daily life

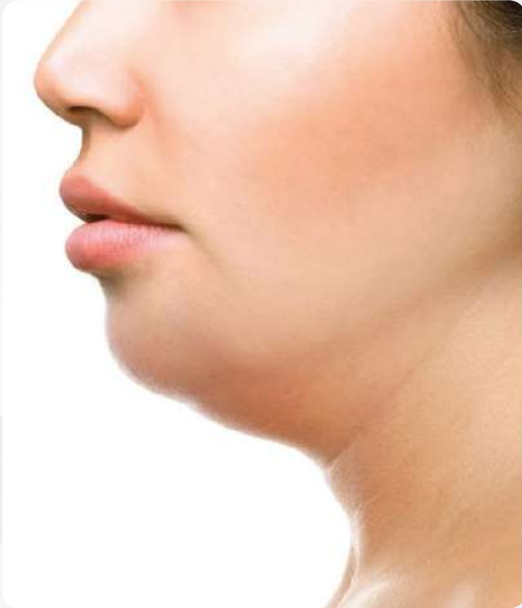
### **Lifting Effect**

Skin Repair and elasticity effect

**BARBIE SLIM**

LIPOLYTIC SOLUTION FOR  
FACE AND BODY

# PROTOCOL FACE



Fat Depth:2~3mm  
Injection gap:1cm  
Volume: 0.3cc per inject  
Total : 5CC



\* Result : proportional to capacity

Fat Depth:3~4mm  
Injection gap:1cm  
Volume: 0.5cc per inject  
Total : 10CC

## PRECAUTIONS AFTER TREATMENT

No alcohol, no saunas in a week

No fish and spicy food

Avoid fatigue in a short period of time

No pressure on the treatment area for a day

May bruise after treatment, but it shall be disappeared within a week

1 hour aerobic exercise required for the treatment day

It works even better if high frequency treatment is done after procedure

**BARBIE SLIM**

LIPOLYTIC SOLUTION FOR  
FACE AND BODY

# PROTOCOL BODY



Fat Depth: 30~50mm  
Injection gap: 1cm  
Volume: 0.5cc per inject  
Total : 20CC

- ✔ Adenosine Triphosphat
- ✔ Walnut seed extract
- ✔ Disodium Adenosine Phosphate
- ✔ Ophiopogon Japonicus Root Extract
- ✔ Aesculus Hippocastanum Extract

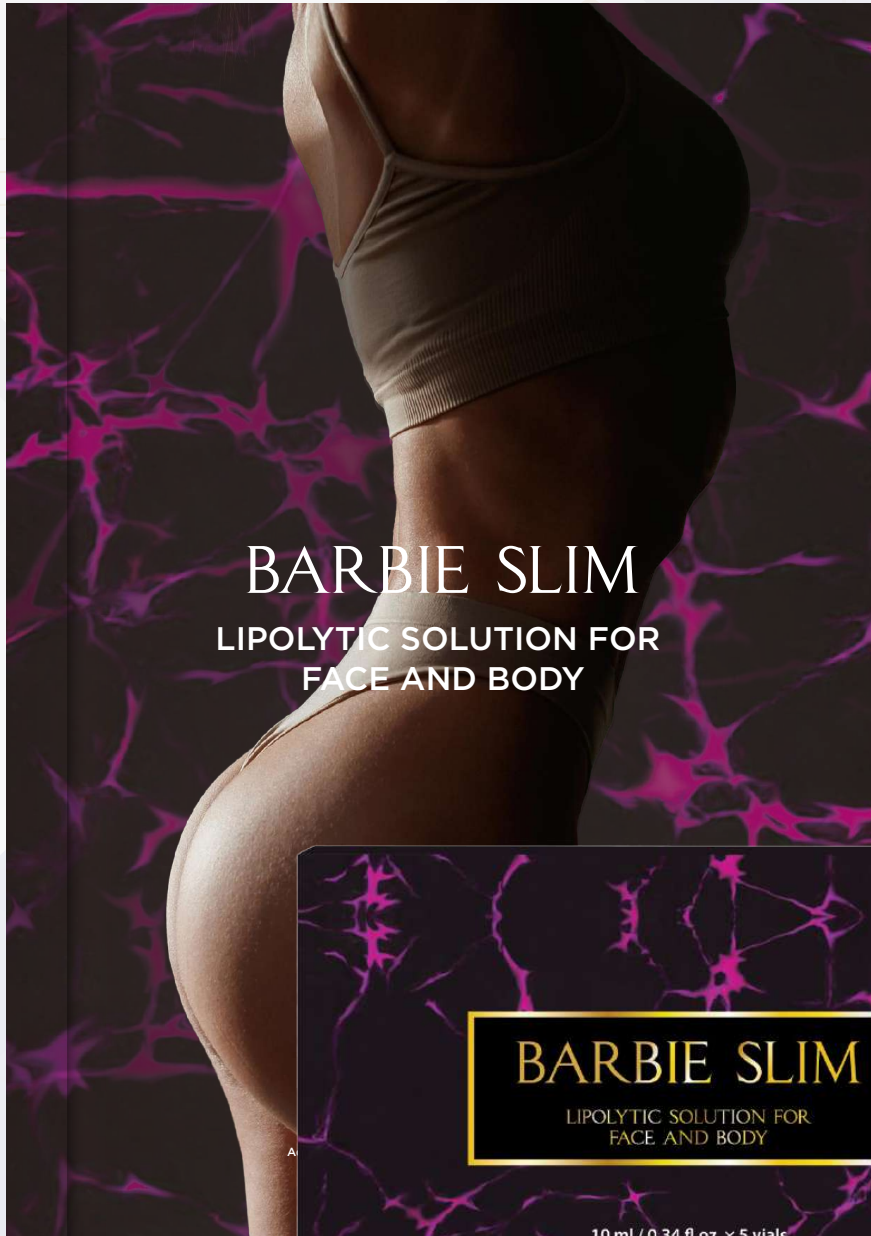
✘ STEROID FREE

✘ PARABEN FREE

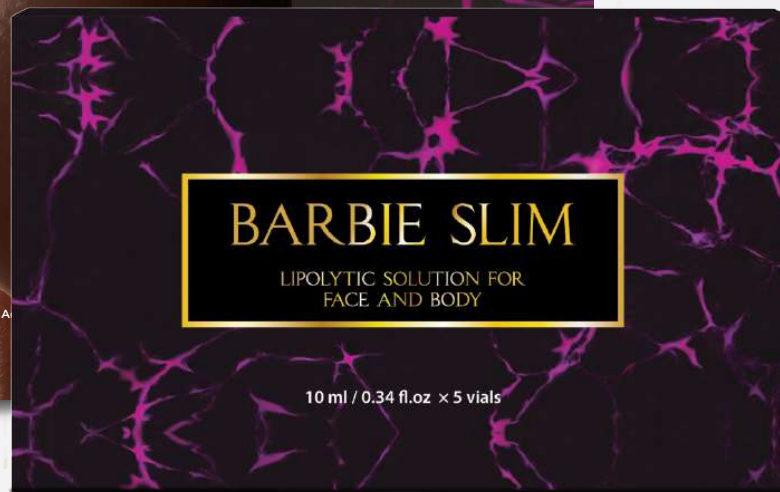
**BARBIE SLIM**  
LIPOLYTIC SOLUTION FOR  
FACE AND BODY

# BARBIE SLIM

LIPOLYTIC SOLUTION FOR  
FACE AND BODY



BARBIE SLIM  
LIPOLYTIC SOLUTION FOR  
FACE AND BODY



Volume : 10ml\*5vial(1Box)

FIRMING SKIN ELASTICITY  
LYPOLYSIS PROMOTING  
SKIN MOISTURIZING  
ANTI-CELLULITE

# BARBIE SLIM

## LIPOLYTIC SOLUTION FOR FACE AND BODY

### FAQ

Q. How many procedures required?

A. Although 1 treatment shall be effect, but 3 treatments Zare recommended for a satisfactory results. The duration of the maintenance may vary according to individual conditions and characteristics.

Q. What ingredients are included?

A. It uses natural ingredients such as natural herb extracts to break down the fat on the face and promote peripheral blood vessel and lymph circulation, which helps to rapidly and safely discharge fat and waste in the body.

Q. Will the procedure make face skin sag?

A. The treatment will not lead your skin hang.

Not only fat, but also facial sagging and edema related to dull sense are reduced, so the line shows well without losing elasticity and pulling. For those with severe facial sagging, it is recommended to do it in parallel with a procedure for strengthening elasticity.

Q. When does it begin to work?

A. It starts two or three days from the procedure and progress for one or two weeks.

Q. How many treatments are recommended?

A. 3 treatments are recommended in normal cases and 1 to 2 additional procedures for high fat.

Q. Will the skin hang if the fat is discharged?

A. In the case of a slanted jawline or a stretched jawline, the droop disappears after the procedure and rather has a liftint.

Q. Any side effects?

A. There may be asymmetrical and partial fat decomposition, but there are no special side effects if the appropriate volume is used and apply the appropriate massage after the procedure.

Q. Is there any swelling?

A. There shall not be much of swelling, but depending on the constitution, it might cause mild one for about a day.